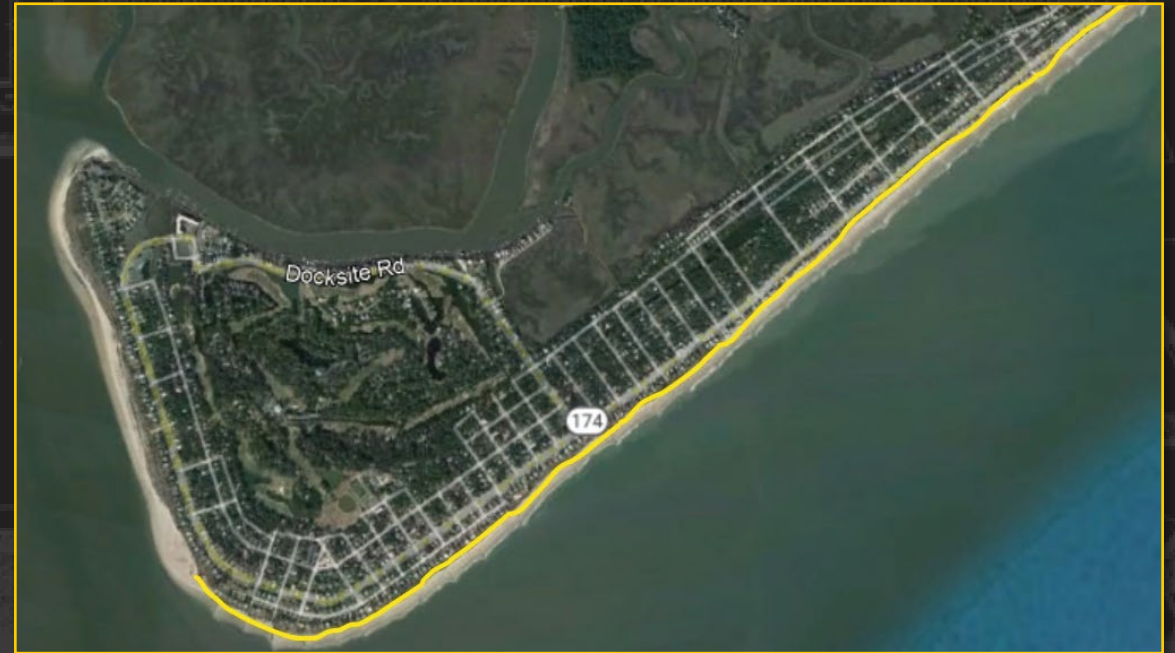


# EDISTO BEACH COASTAL STORM RISK MANAGEMENT

## Agenda

- Meeting Purpose
- Team Introductions
- Project Purpose
- Project timeline and status
- Project Description
- Beach Access
- Open house
- Full group Q&A (broad)



US Army Corps  
of Engineers®

U.S. ARMY



# PROJECT PURPOSE

**Reduce the risk of coastal storm damage to property and infrastructure on Edisto Beach for a 50-year period**

Additional benefits:

- project includes 3 nourishments which are cost-shared with the federal government;
- Federal project includes potential eligibility for post-storm repairs;
- attractive and usable beach for both residents and visitors.





# PROJECT COST SHARE

<b>Total Cost of Initial Construction</b>	<b>\$31M</b>
Federal cost (65%)	\$20M
Town cost (35%) SCPRT \$7.5M In-kind credit est. \$3M	\$10M

Periodic nourishments are cost-shared 50/50

Potentially eligible for Disaster repair – 100% federal – Flood Control and Coastal Emergencies (FCCE; PL 84-99)

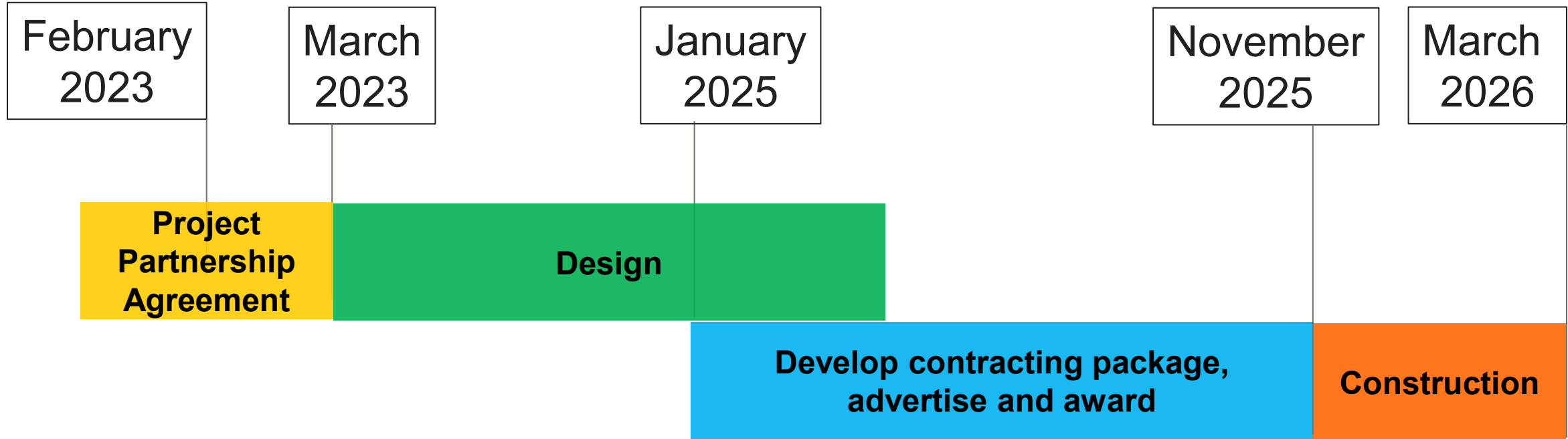


# EXAMPLE: NORTH MYRTLE BEACH





# DESIGN & CONSTRUCTION PHASES





# PROJECT DESCRIPTION



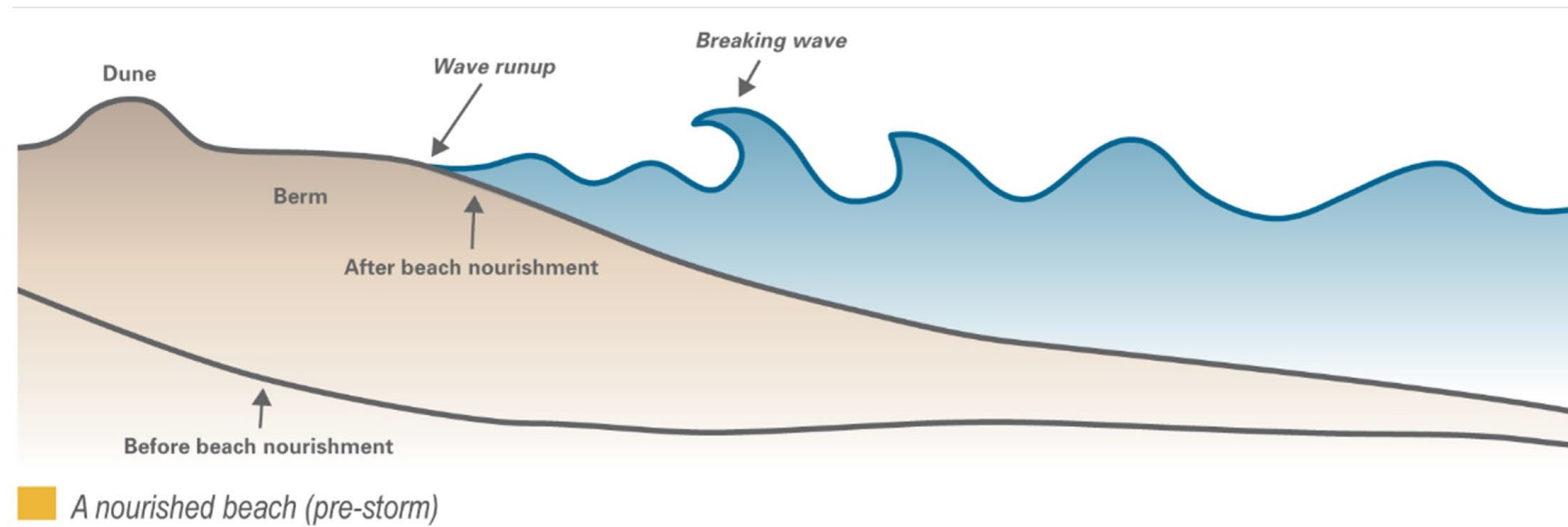
The project is approximately 3.3 miles in length and includes a vegetated dune and berm that are designed to reduce risk to life and property on Edisto Beach and will work with the groins already in place.





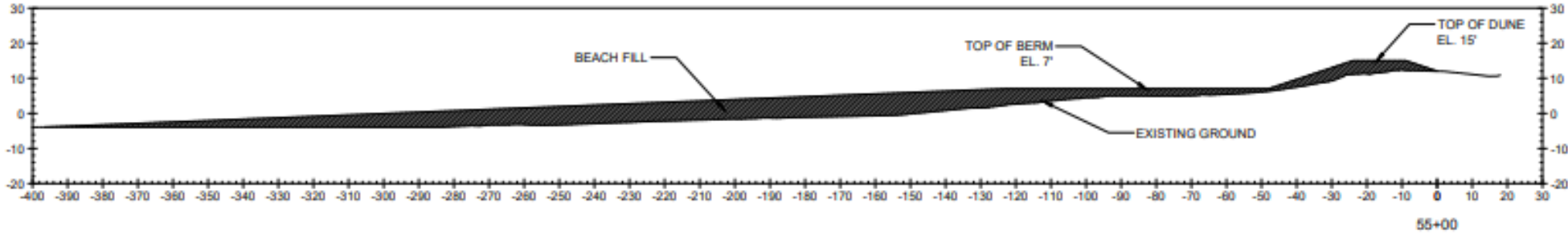
# PROJECT DESCRIPTION

The berm and dune slow wave energy to reduce risk to life and property on Edisto Beach and will work with the groins already in place.





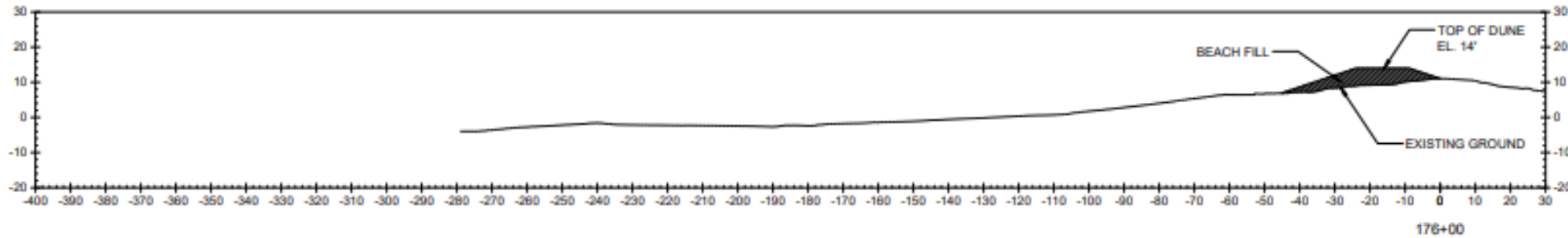
# TYPICAL BEACH SECTIONS



Near Beach Access #5

## TYPICAL BEACH FILL SECTION

HORIZONTAL SCALE: 1" = 10'  
VERTICAL SCALE: 1" = 10'

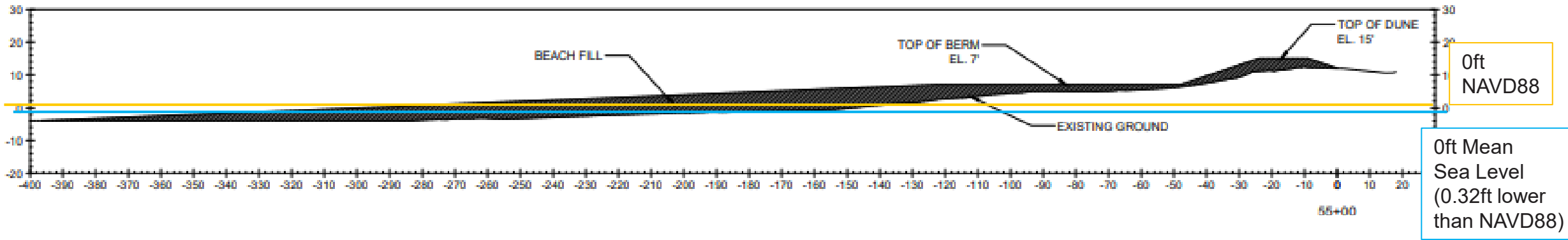


Near Beach Access #31





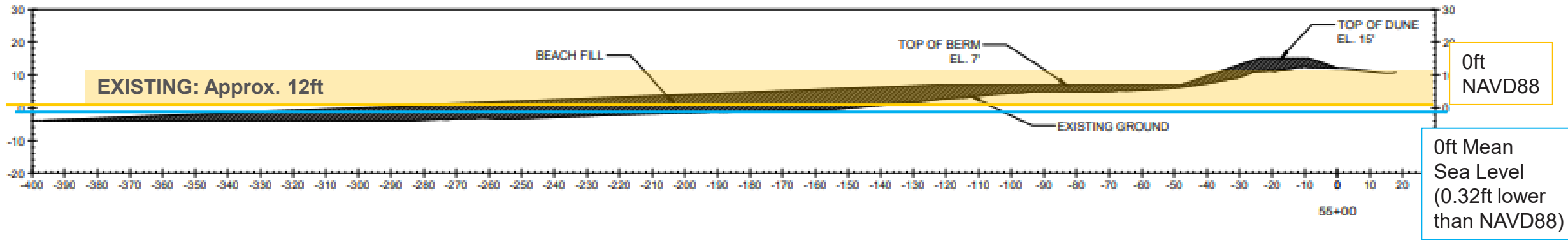
# TYPICAL BEACH SECTIONS



Near Beach Access #5



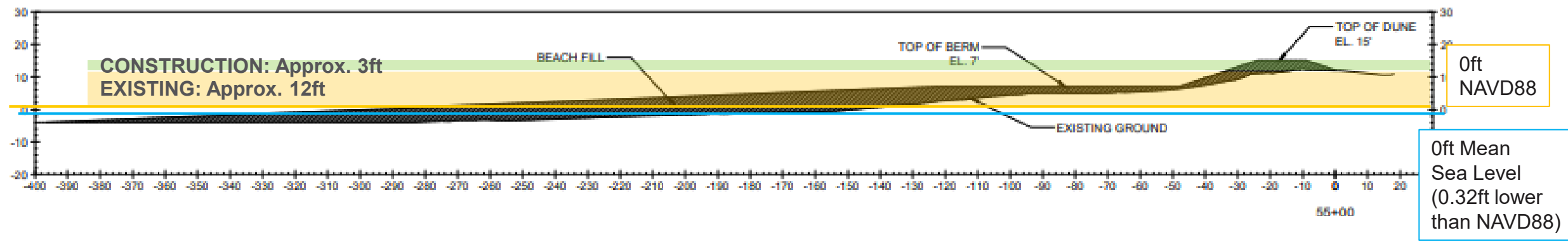
# TYPICAL BEACH SECTIONS



Near Beach Access #5



# TYPICAL BEACH SECTIONS

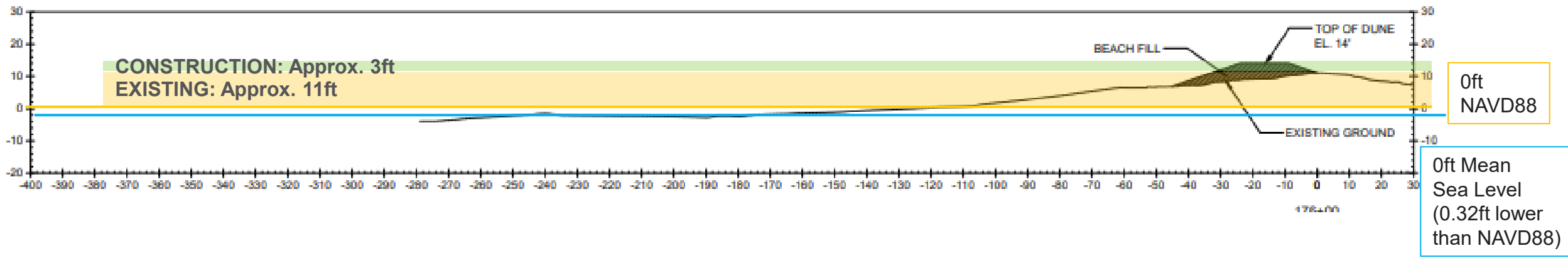


Near Beach Access #5





# TYPICAL BEACH SECTIONS



Near Beach Access #31



# HOW WILL WE ACCESS THE BEACH?

Access to the beach will take place via public access points, just as you access the beach today

The dune will have grassing and fencing, and people will be discouraged from walking on the dune



# PROJECT MAP



The screenshot displays the 'Edisto Beach Map Viewer' interface for the 'USACE Charleston District'. The map shows Edisto Beach with various streets and overlays. The left sidebar contains the following sections:

- Easement Lines 2023**
  - Draft Construction Baseline 2023 (dashed blue line)
  - Draft Easement Line 2023 (solid red line)
- Edisto Parcels 2023** (represented by an orange outline icon)

The map includes a search bar at the top with the text 'Find address or place'. A QR code is overlaid on the right side of the map. The bottom of the interface shows the Esri logo and the text 'POWERED BY esri'.



# WHY MUST THERE BE EASEMENTS?

All projects cost-shared by the U.S. Army Corps of Engineers require the Non-Federal Sponsor to acquire easements on portions of private property where a project is being built.

Easements allow:

- Access for the purposes of restoring the dune and berm designed to reduce risk of damage by coastal storms.
- The Corps to conduct periodic nourishment, for which costs are shared by the federal government
- The Town to be potentially eligible for 100% of the cost of post-storm repairs to the beach if a natural disaster has been declared





# NOTES ABOUT EASEMENTS

The easements will be held by the Town of Edisto Beach, not the U.S. Army Corps of Engineers.

Should the project be deauthorized, the Town has the ability to revoke the easements, and they will be returned to the property owner.

The easements may only be transferred to another qualified Non-Federal Sponsor, in the event that the Town can no longer serve as the NFS.

The cost-shared project requires that the public have access to the beach; the public will be guided to the beach at access points. Per Town ordinance it is *unlawful for anyone to walk-upon, disturb, place objects upon or in any other manner disrupt or disturb the vegetation and fencing located on the beach*





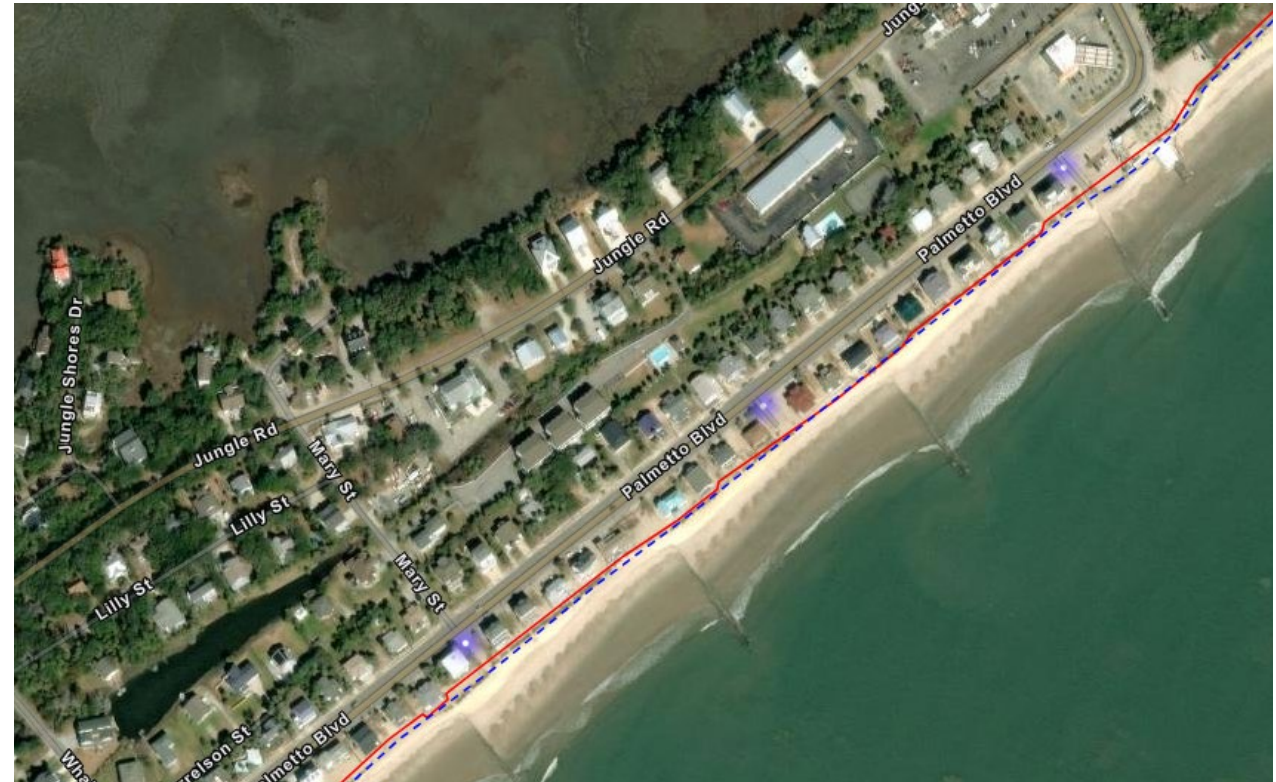
# WHERE WILL THE EASEMENTS BE?

## (Red) – easement line

*Approximately follows the landward toe of the existing dune*

## Blue – construction baseline

*Approximately follows the seaward toe of the existing dune. The constructed dune will tie in here*



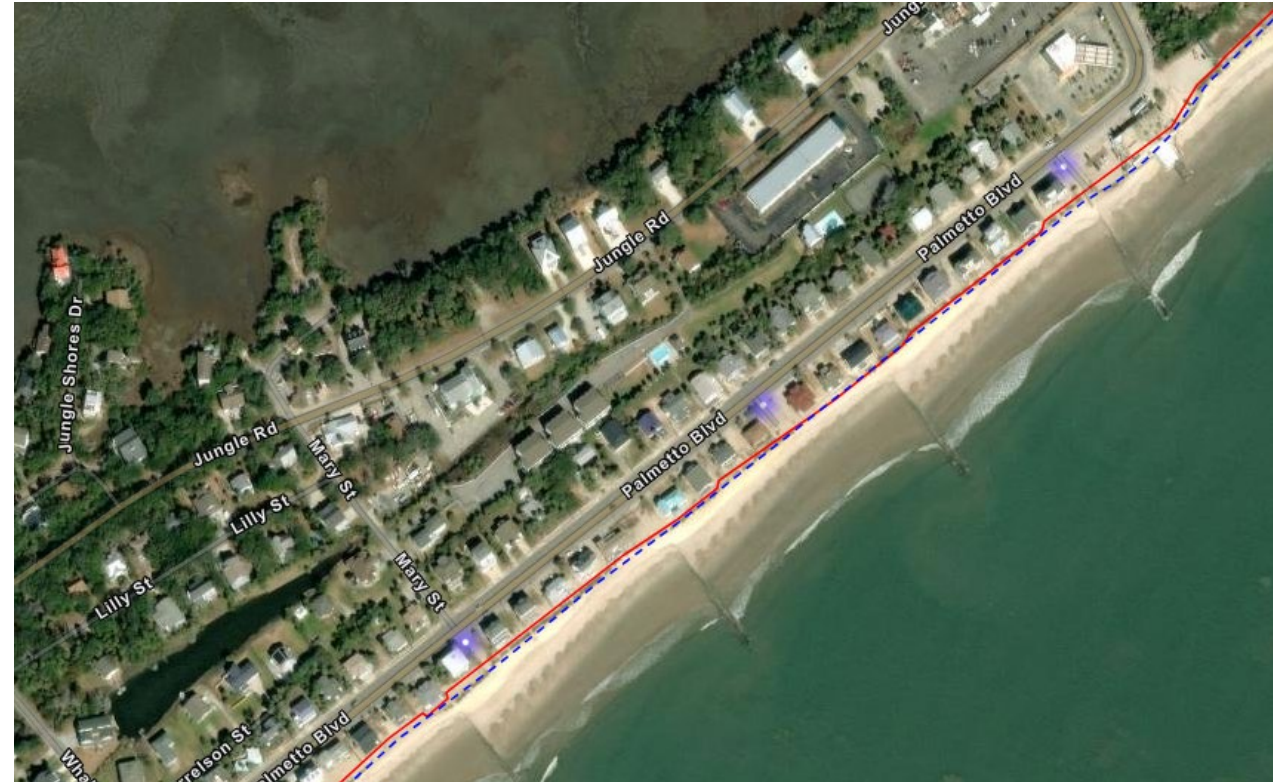
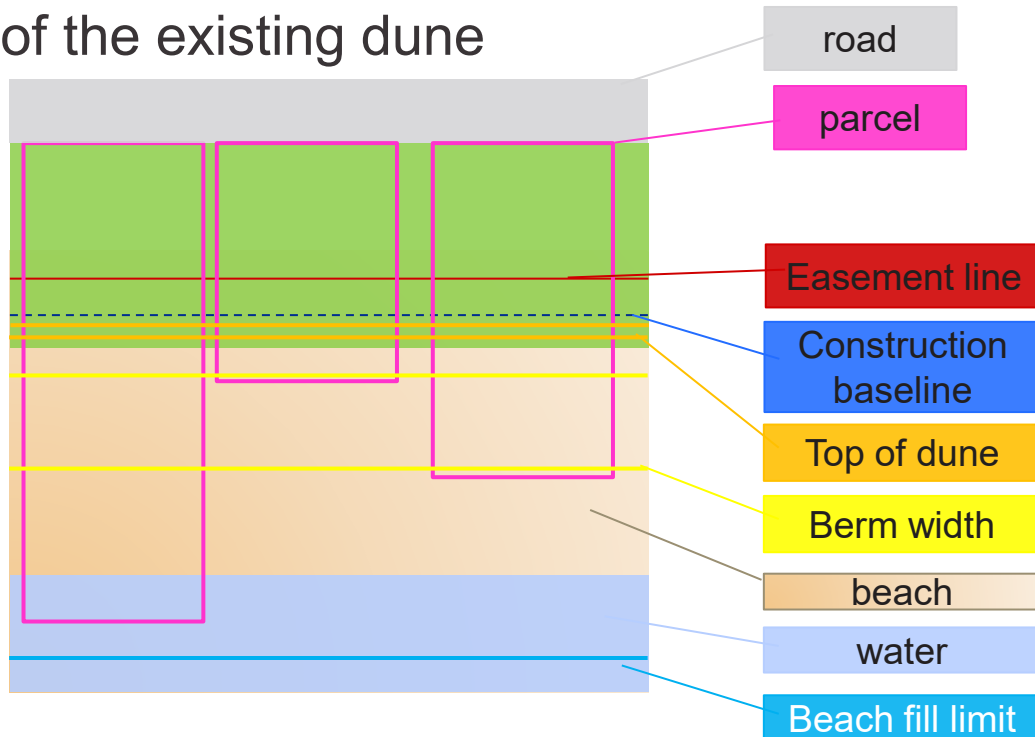
# WHERE WILL THE EASEMENTS BE?

## (Red) – easement line

Approximately follows the landward toe of the existing dune

## Blue – construction baseline

Approximately follows the seaward toe of the existing dune



*\*This is a sketch to help facilitate understanding. It does not represent real properties on Edisto Beach*



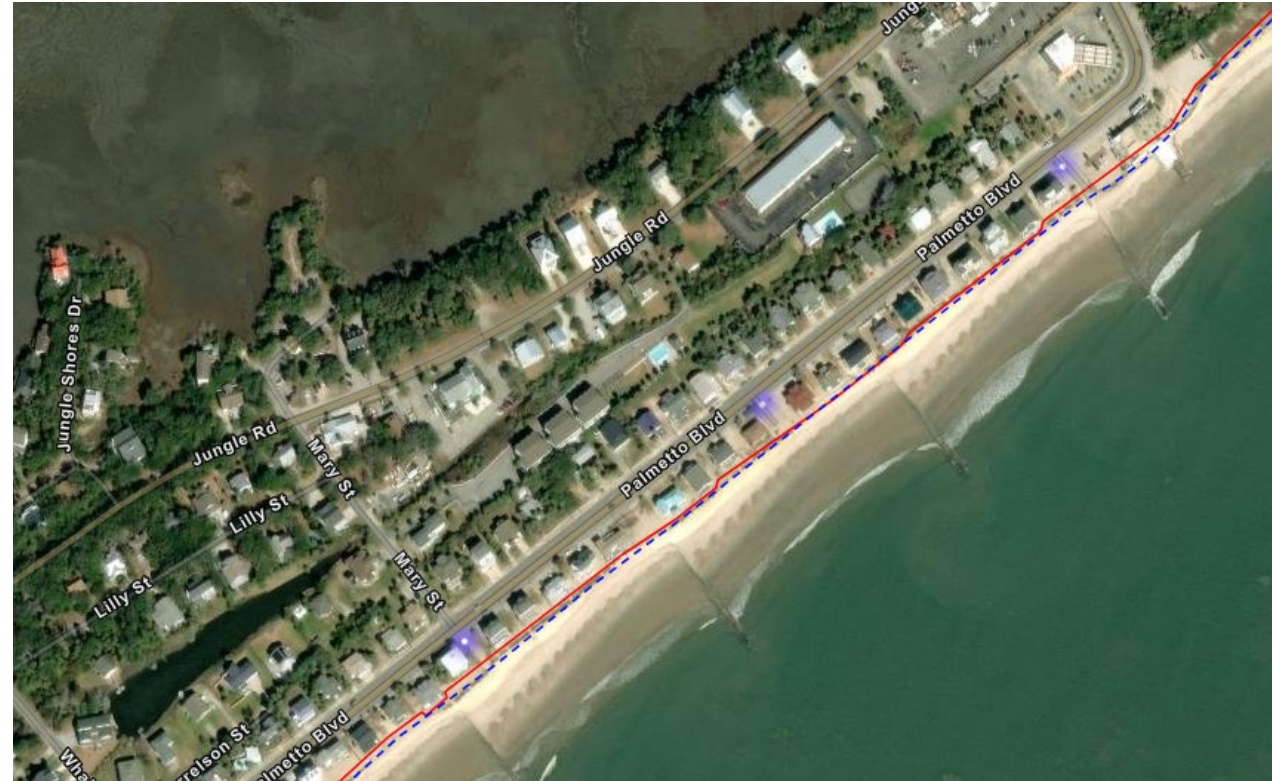
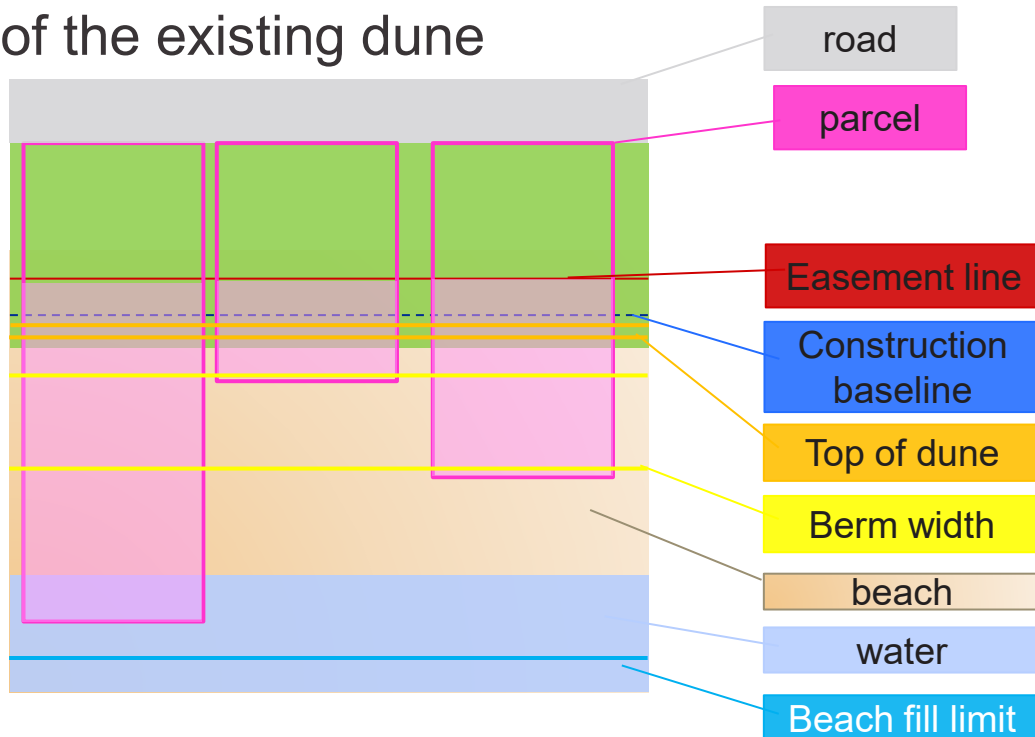
# WHERE WILL THE EASEMENTS BE?

## (Red) – easement line

Approximately follows the landward toe of the existing dune

## Blue – construction baseline

Approximately follows the seaward toe of the existing dune



*\*This is a sketch to help facilitate understanding. It does not represent real properties on Edisto Beach*





# OPEN HOUSE, Q&A

High-level, broad Q&A

