

DAVIS & FLOYD

SINCE 1954



Town of Edisto Beach, SC

Yacht Club Road Basin Study

11/10/2025

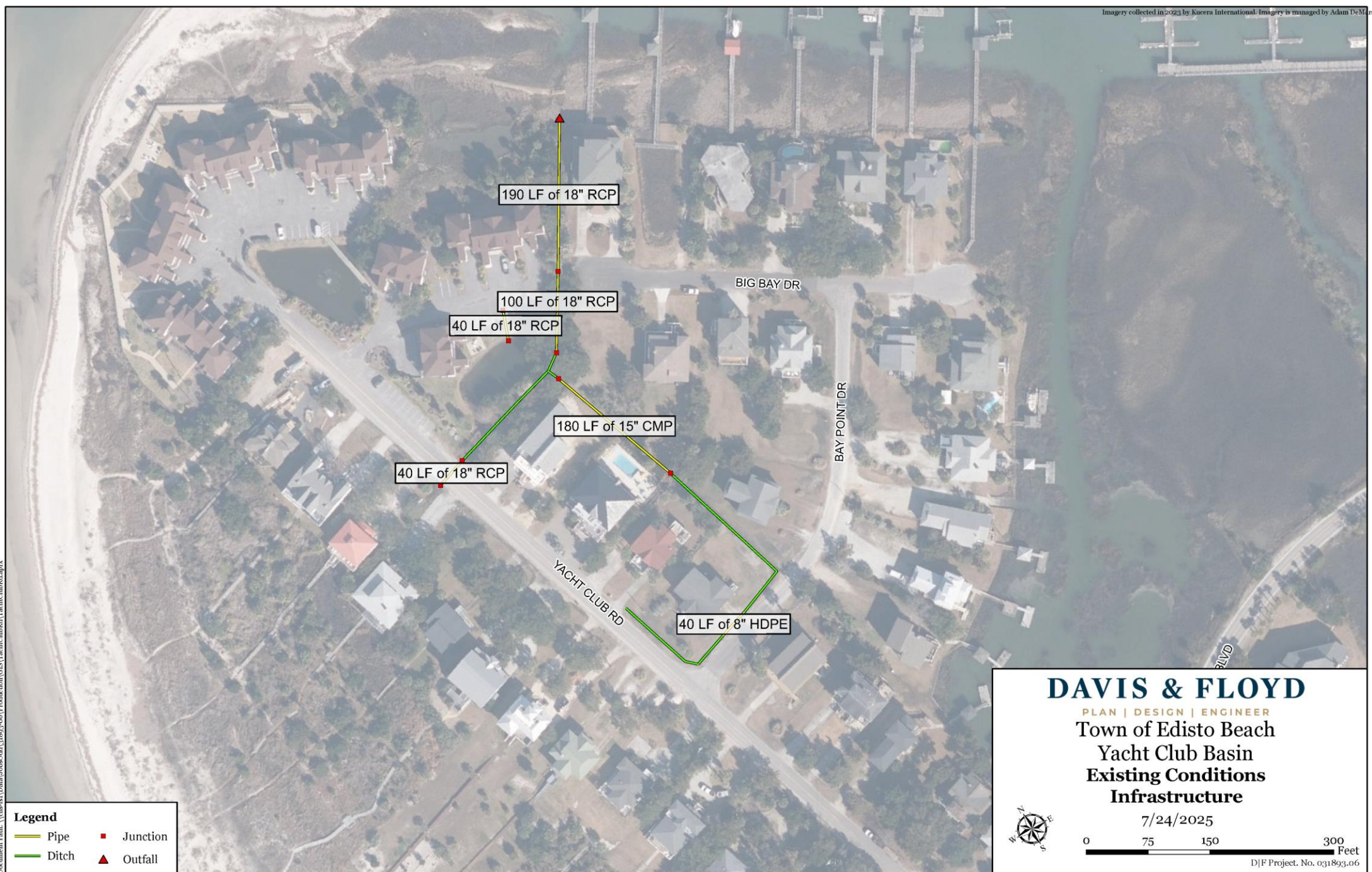
Existing Conditions

- Experiences flooding during storms and tidal events.
- Conducted research and field investigations to evaluate existing system.
- Modeled 10- and 25- year storms for normal low, high and king tide events.
- Modeled to determine areas of inundation, depth and duration of flood events.



Exhibit A: Field Investigation using the R12i GPS unit and images of the system.

Document Path: \\che-fs1\Data\Jobs\0411\893-06\Production\GIS\YachtClub\BAY YachtClubBld.aprx



Legend

Pipe	Junction
Ditch	Outfall

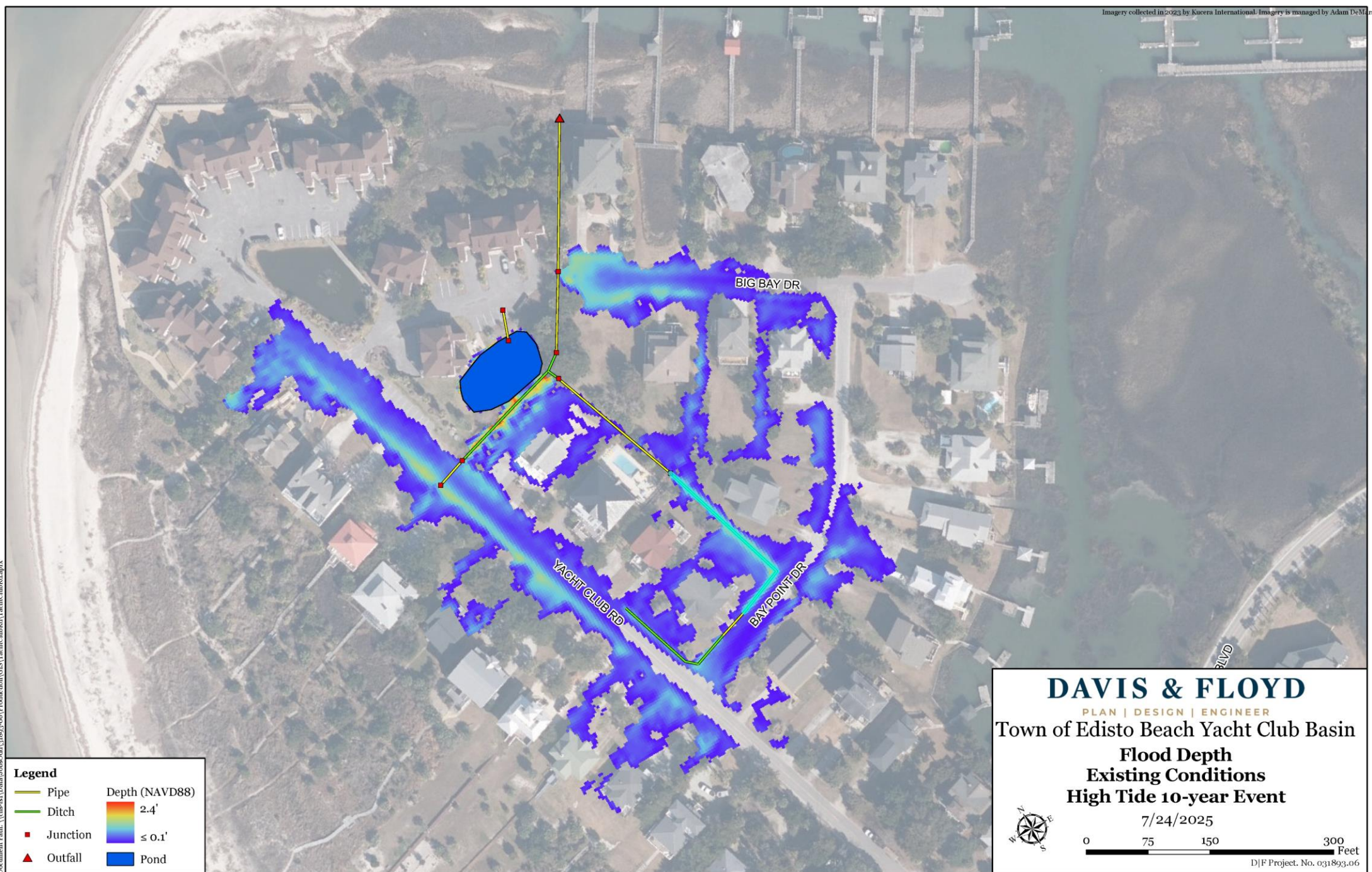
DAVIS & FLOYD
PLAN | DESIGN | ENGINEER
Town of Edisto Beach
Yacht Club Basin
Existing Conditions
Infrastructure

7/24/2025

0 75 150 300 Feet

D\F Project. No. 031893.06

Document Path: \\chc-fs1\Data\Jobs\048\048\1\893-06\Production\GIS\YachtClubRD\YachtClubRD.aprx



Legend

Pipe	Depth (NAVD88)
Ditch	
Junction	2.4'
Outfall	≤ 0.1'
	Pond

DAVIS & FLOYD
PLAN | DESIGN | ENGINEER

Town of Edisto Beach Yacht Club Basin

Flood Depth
Existing Conditions
High Tide 10-year Event

7/24/2025

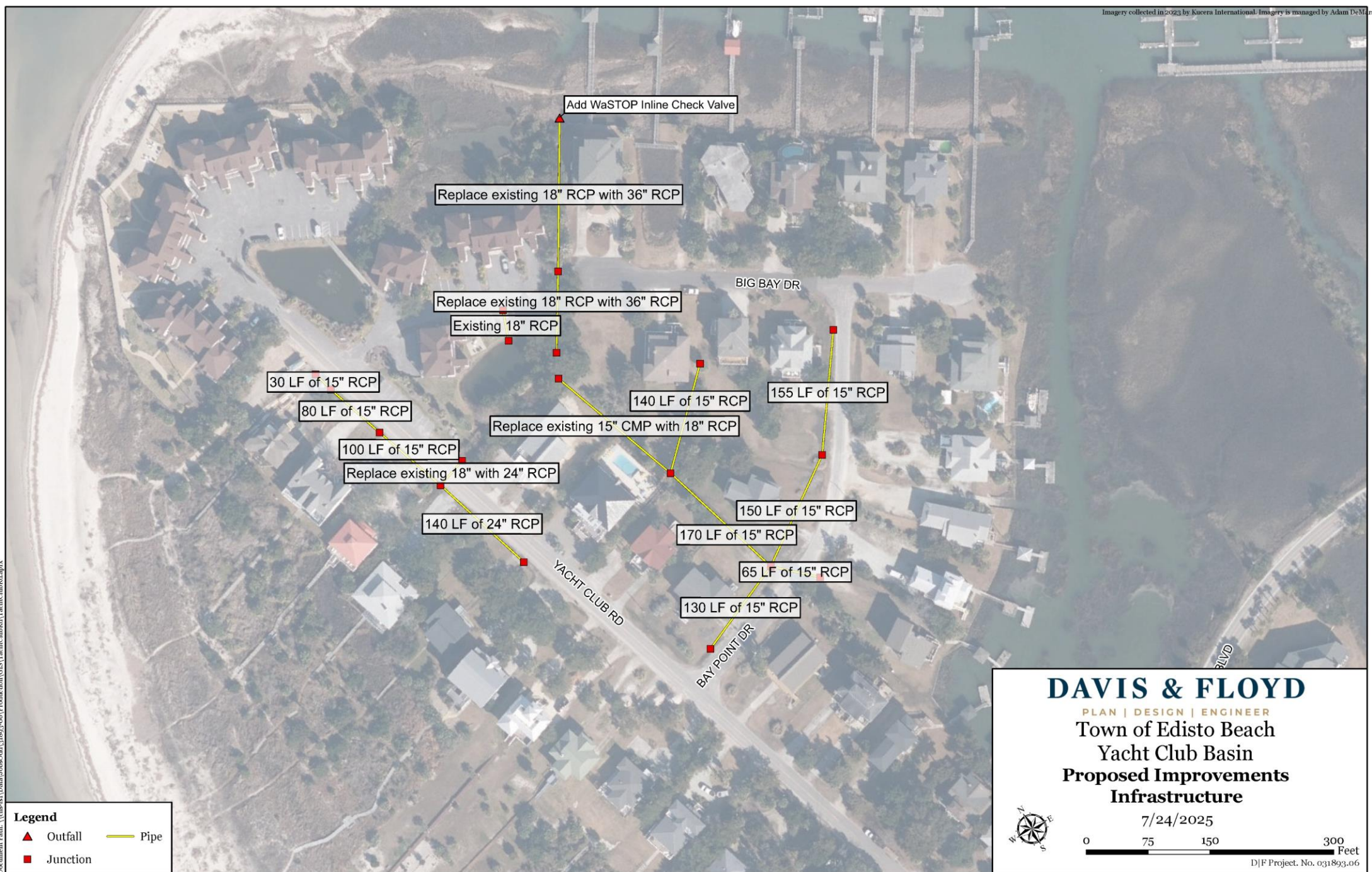
0 75 150 300 Feet

D\F Project No. 031893.06

Proposed System Improvements

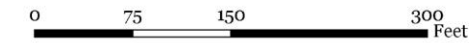
- Extension of pipe network
- Upsizing existing pipes
- Installation of inline check valve at outfall
- Ditch improvements

Document Path: \\che-fs1\Data\Jobs\0411\1893-06\Production\GIS\YachtClubRD\YachtClubRD.aprx



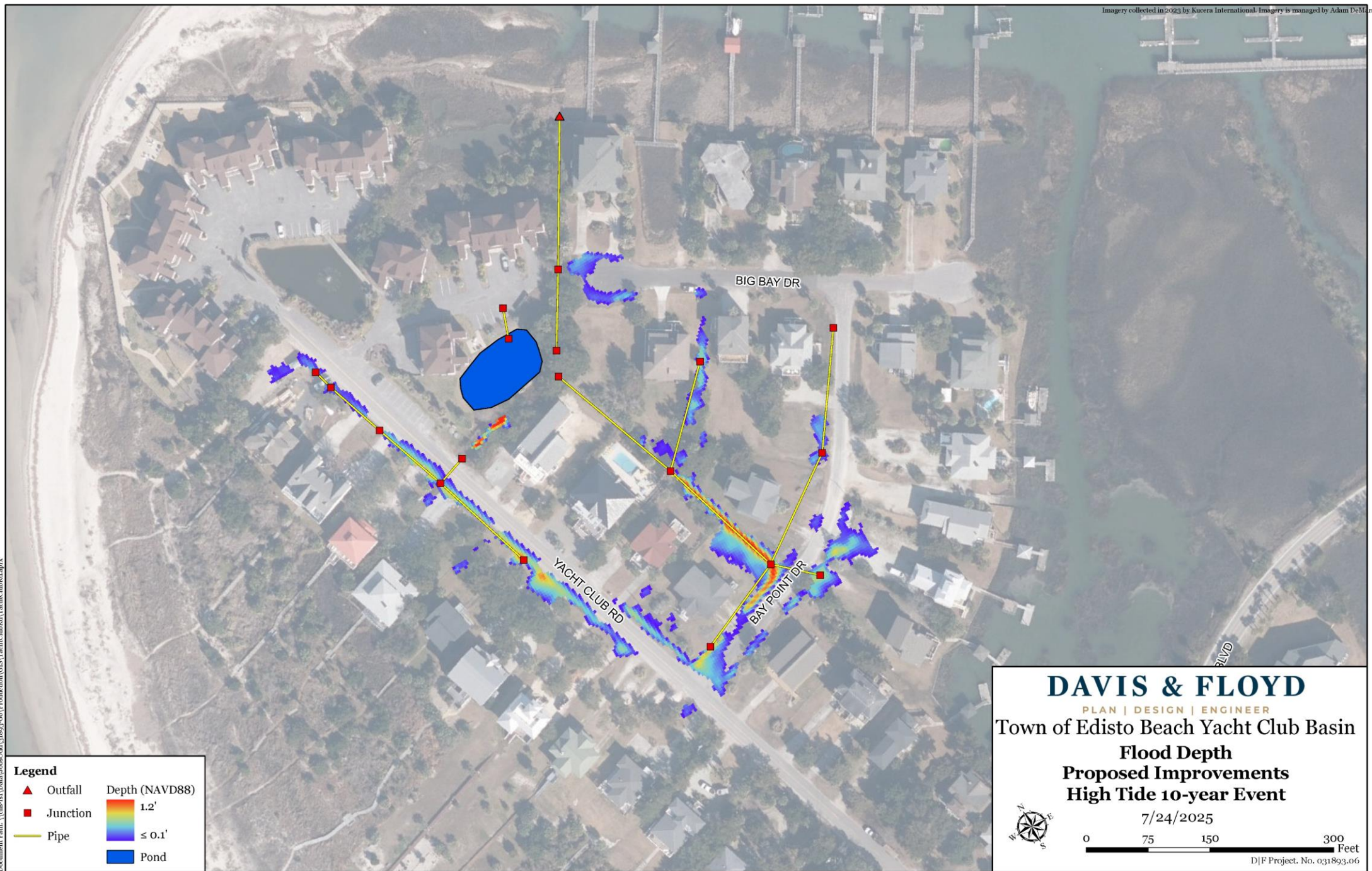
DAVIS & FLOYD
PLAN | DESIGN | ENGINEER
Town of Edisto Beach
Yacht Club Basin
Proposed Improvements
Infrastructure

7/24/2025



D\F Project. No. 031893.06

Document Path: \\cbe-fs1\Data\Jobs\Old\1893-06\Production\GIS\YachtClub\Edisto Yacht Club\Edisto.mxd



Legend

▲ Outfall	Depth (NAVD88)
■ Junction	
— Pipe	
	1.2'
	≤ 0.1'
	Pond

DAVIS & FLOYD
PLAN | DESIGN | ENGINEER

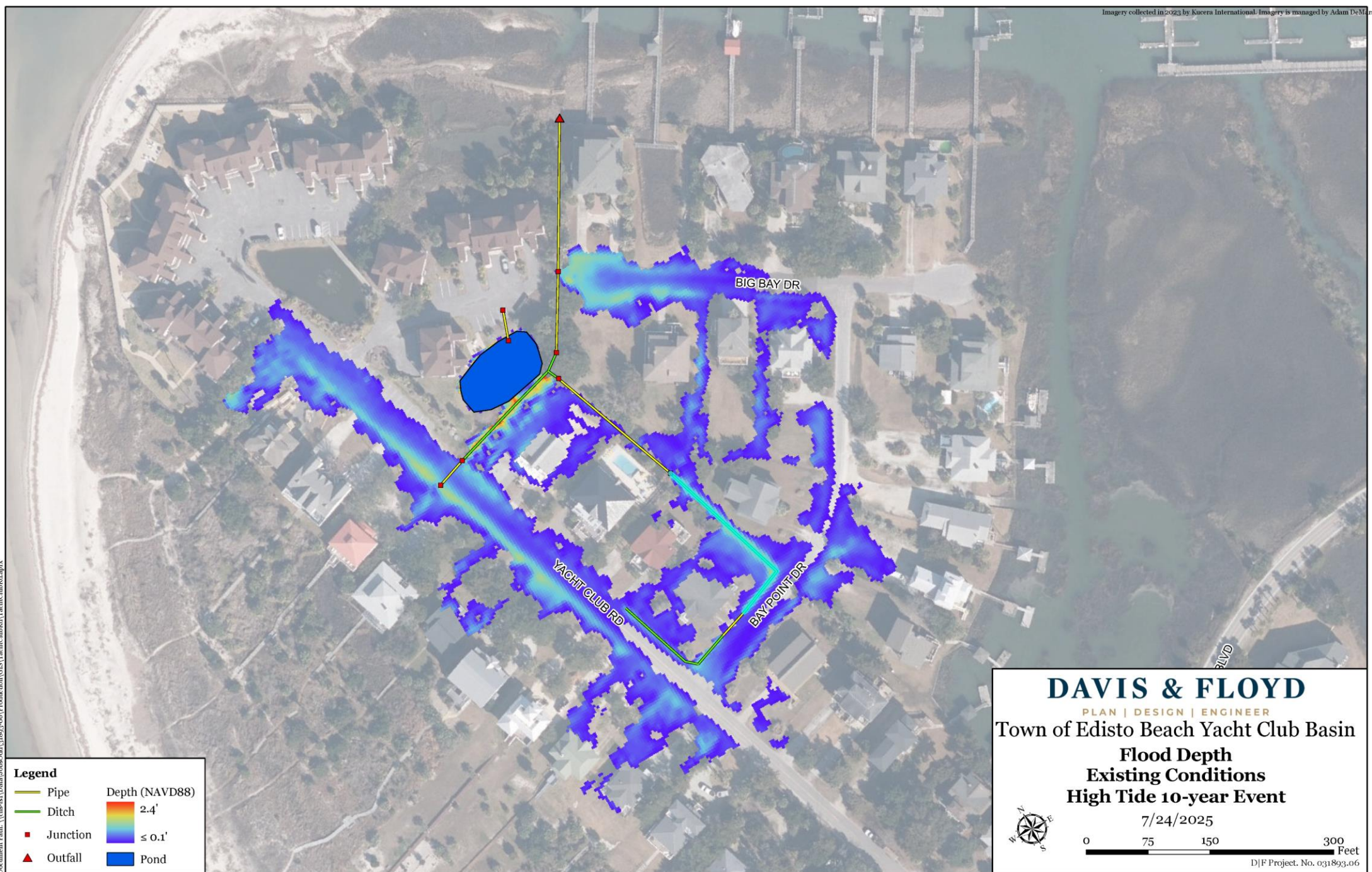
Town of Edisto Beach Yacht Club Basin
Flood Depth
Proposed Improvements
High Tide 10-year Event

7/24/2025

0 75 150 300 Feet

D\F Project No. 031893.06

Document Path: \\chc-fs1\Data\Jobs\048\048\1\893-06\Production\GIS\YachtClubRD\YachtClubRD.aprx



Legend

Pipe	Depth (NAVD88)
Ditch	
Junction	2.4'
Outfall	≤ 0.1'
	Pond

DAVIS & FLOYD
PLAN | DESIGN | ENGINEER

Town of Edisto Beach Yacht Club Basin

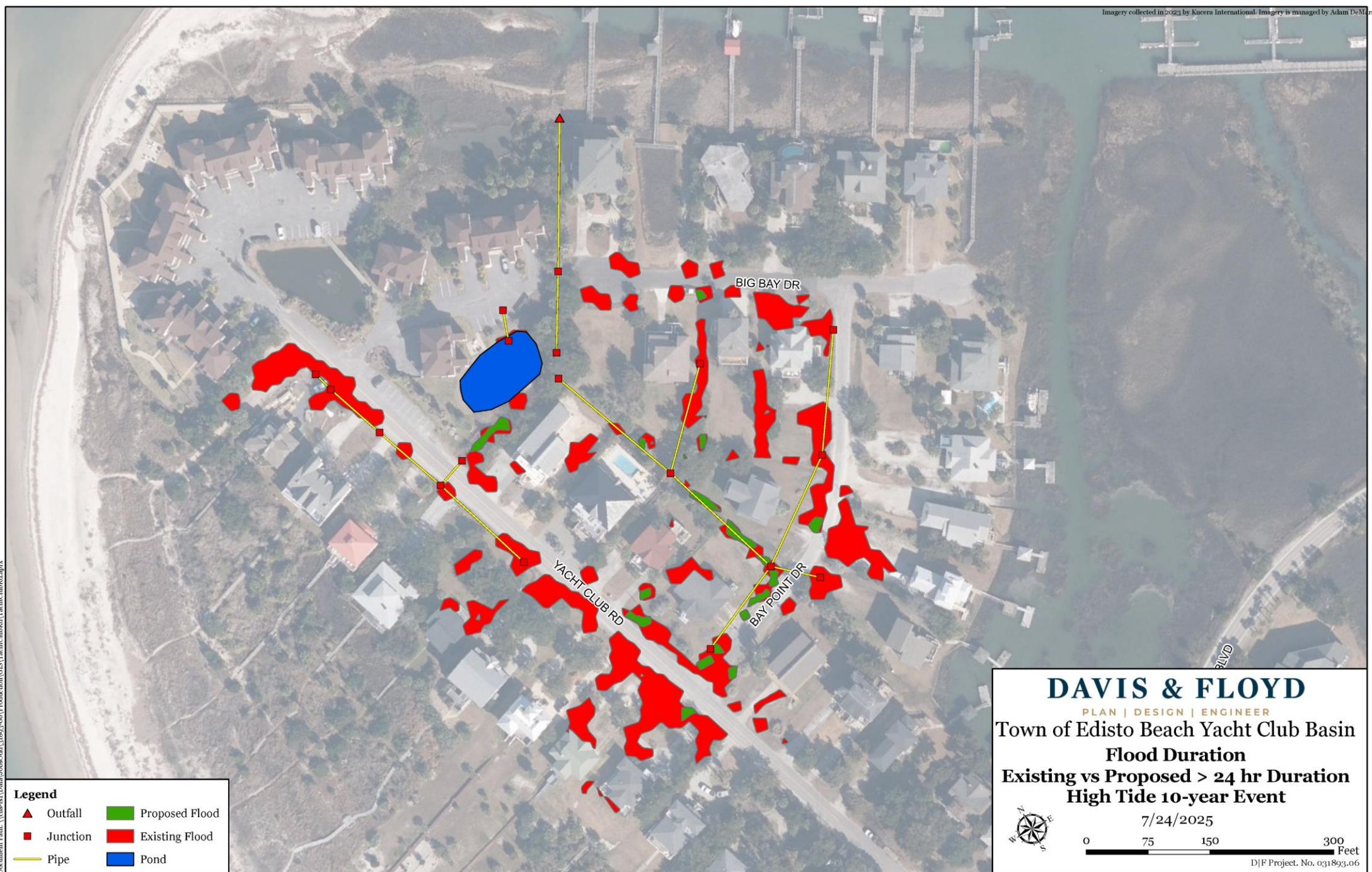
Flood Depth
Existing Conditions
High Tide 10-year Event

7/24/2025

0 75 150 300 Feet

D\F Project. No. 031893.06

Document Path: \\che-fs1\Data\Jobs\041\11893-06\Production\GIS\YachtClub\B\YachtClubBld.aprx



Legend

▲ Outfall	■ Proposed Flood
■ Junction	■ Existing Flood
— Pipe	■ Pond

DAVIS & FLOYD
PLAN | DESIGN | ENGINEER
Town of Edisto Beach Yacht Club Basin
Flood Duration
Existing vs Proposed > 24 hr Duration
High Tide 10-year Event
7/24/2025
0 75 150 300 Feet
D\F Project. No. 031893.06