

# Hurricane Preparedness

Town of Edisto Beach and Colleton  
County Fire-Rescue

# Agenda

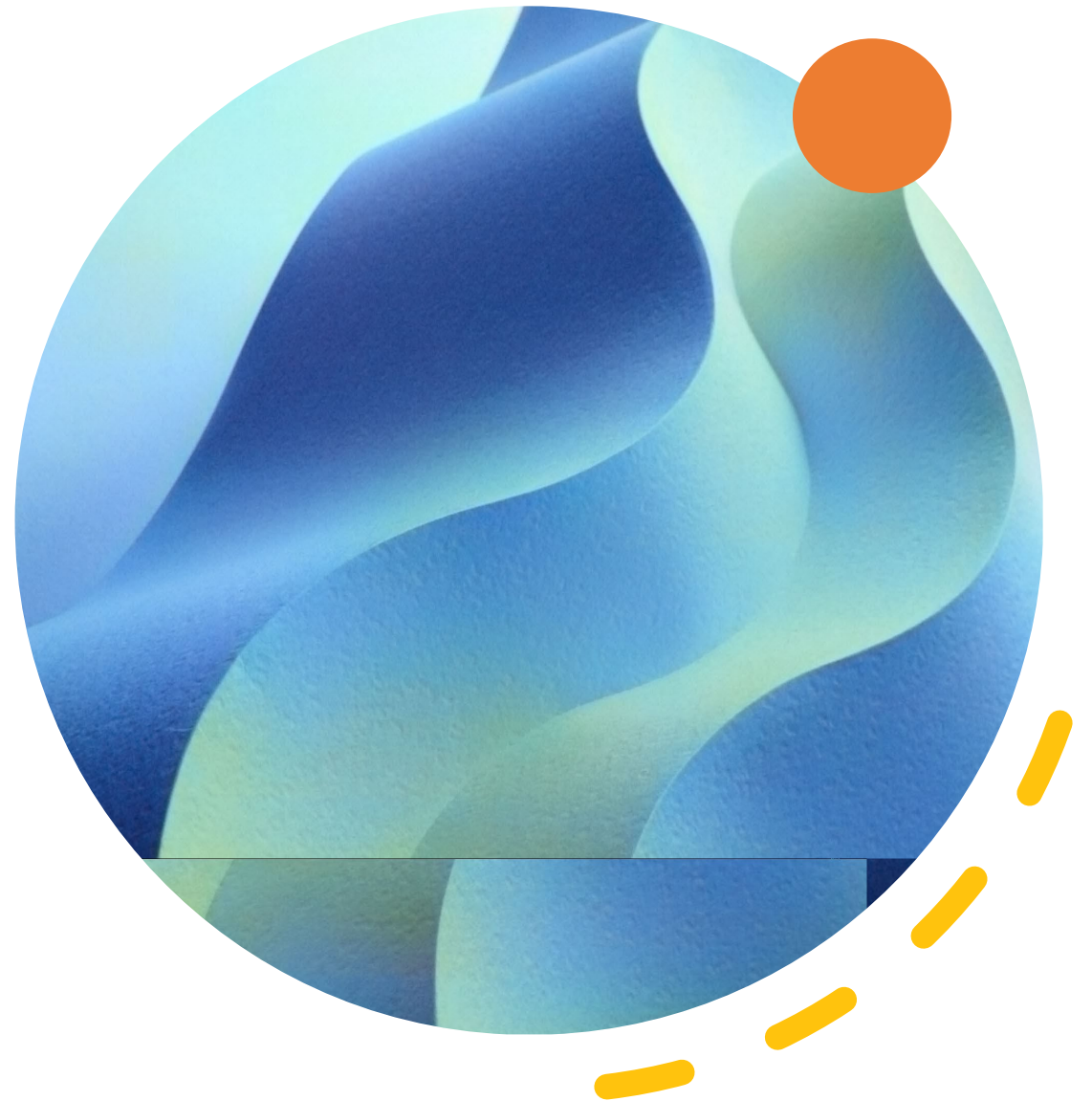
---

- Introductions
- SC Hurricane History
- Hurricane Wind Scale
- Watch/Warning
- Threats to Edisto Beach
- Cone of Uncertainty (Colleton County)
- Edisto Beach Preparation
- Preparing your Home
- Resources
- Disaster Supply Kit/Planning for Your Pet
- Evacuation/Re-Entry
- Contact Information
- Questions?



# South Carolina Hurricane History

Hurricane Dorian, 2019, Cat 3	Hurricane's Florence and Michael, 2018	Hurricane Irma, 2017
Hurricane Matthew, 2016, Cat 1	Hurricane Joaquin, 2018	Hurricane Gaston and Charley, 2004, Cat 2
Hurricane Kyle, 2002, Cat 2	Hurricane Hugo, 1989, Cat 4	Hurricane Gracie, 1959, Cat 3
	Hurricane Hazel, 1954, Cat 4	





# Hurricane Matthew - 2016



# Know the difference between a Watch and a Warning

Hurricane Watch - Issued 48 hours in advance of threat

What do I do? – prepare your belongings and plan to evacuate if a Hurricane or Tropical Storm Warning is issued.

Hurricane Warning - Issued 36 hours in advance of threat

What do I do? – finish storm preparations and immediately evacuate if directed by local officials. Plan housing and pet arrangements in advance.



# Threats to Edisto Beach

Hazards

Storm Surge

Wind

Rainfall-Induced Flooding

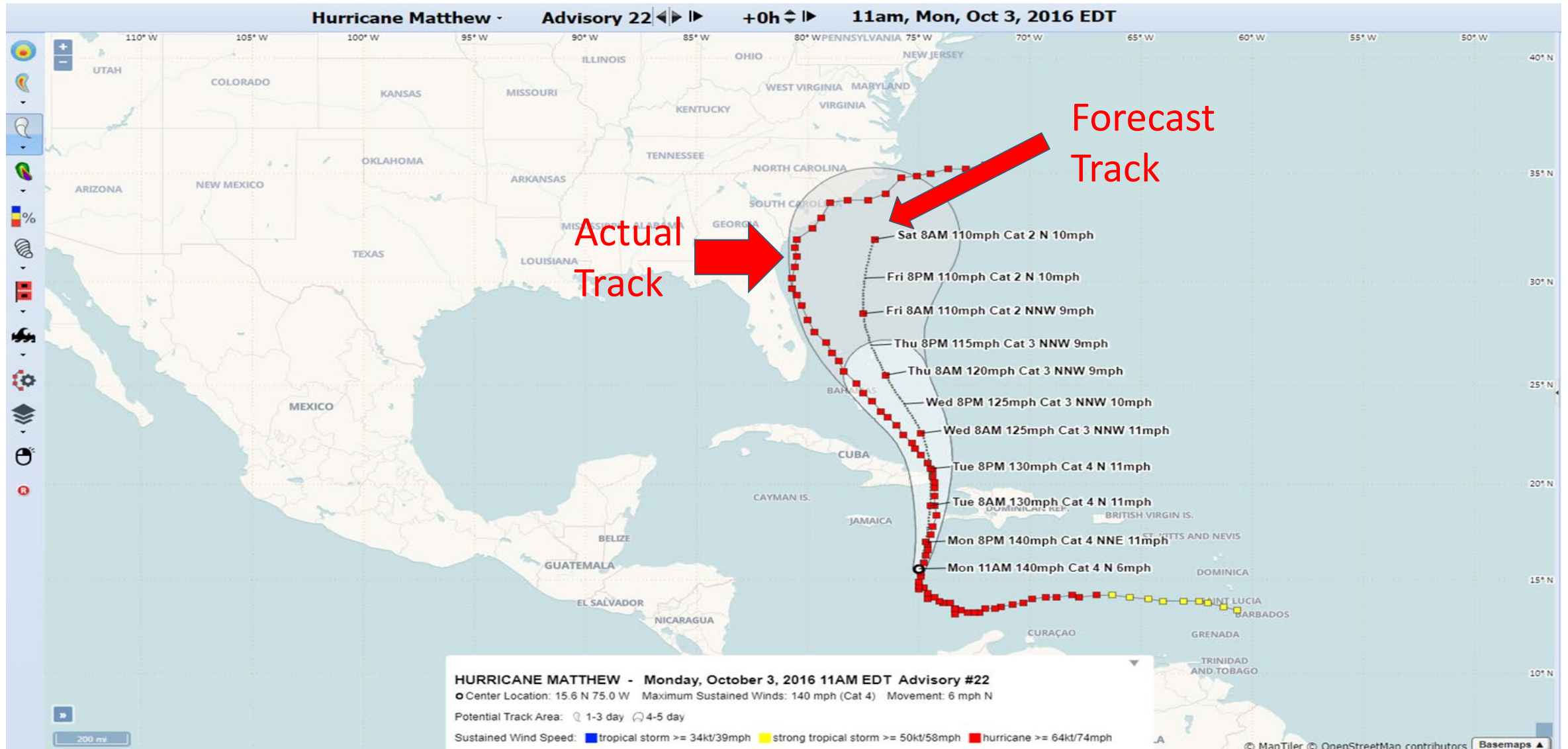
Tornadoes



# Saffir-Simpson Hurricane Wind Scale



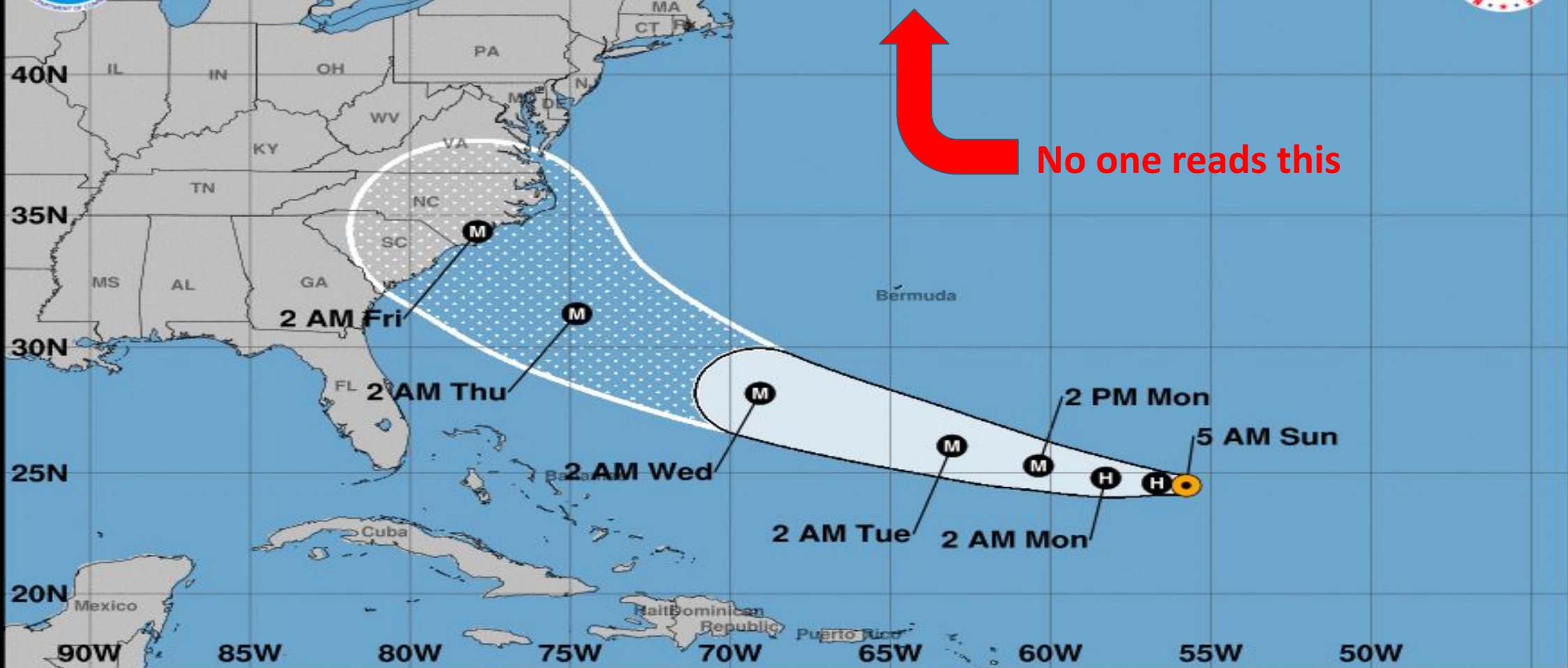
# The Cone of “Uncertainty” NOT the Cone of “Certainty”







**Note: The cone contains the probable path of the storm center but does not show the size of the storm. Hazardous conditions can occur outside of the cone.**



**Tropical Storm Florence**

Sunday September 09, 2018  
 5 AM AST Advisory 40  
 NWS National Hurricane Center

**Current information:** ●

Center location 24.5 N 55.8 W  
 Maximum sustained wind 70 mph  
 Movement W at 6 mph

**Forecast positions:**

● Tropical Cyclone ○ Post/Potential TC  
 Sustained winds: D < 39 mph  
 S 39-73 mph H 74-110 mph M > 110 mph

**Potential track area:**

▭ Day 1-3 ▭ Day 4-5

**Watches:**

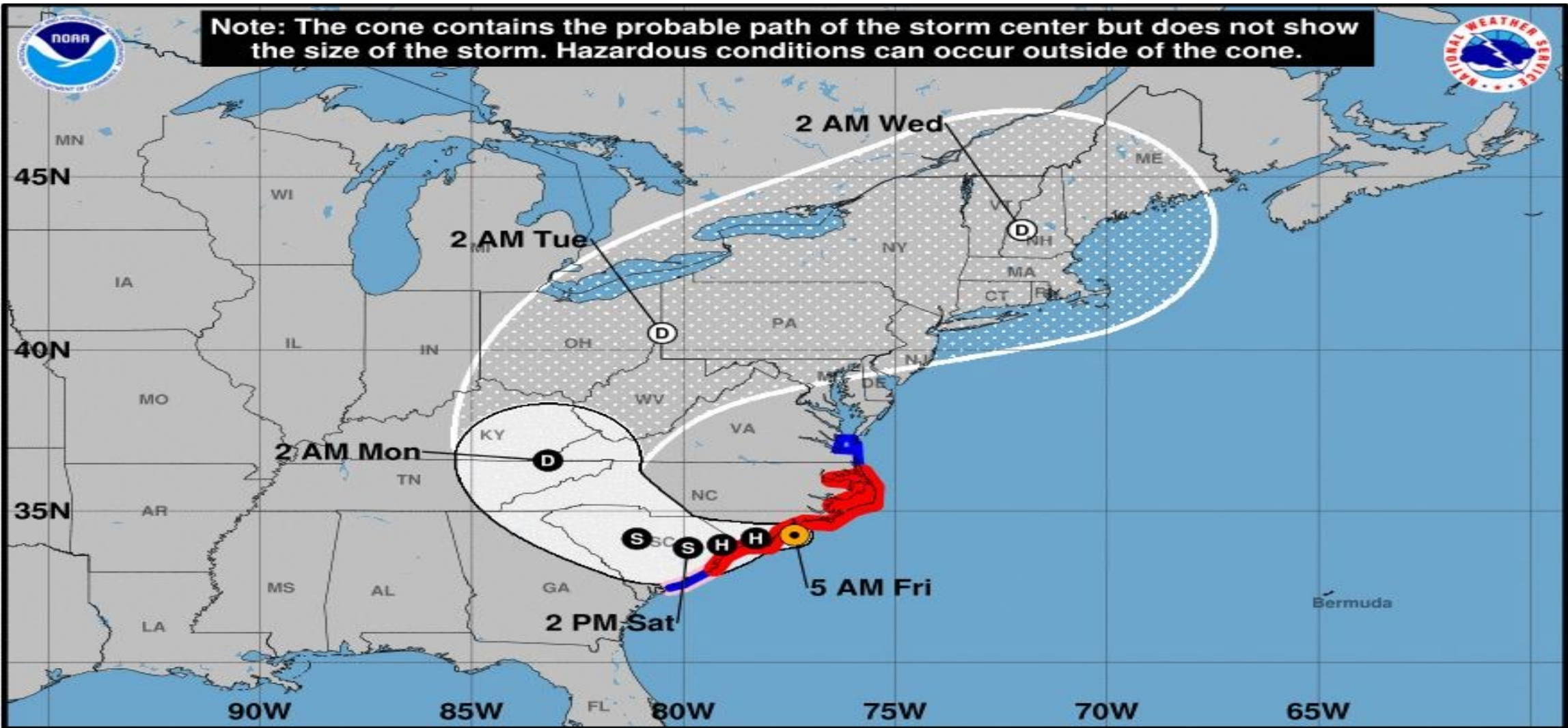
▭ Hurricane ▭ Trop Storm

**Warnings:**

▭ Hurricane ▭ Trop Storm



**Note: The cone contains the probable path of the storm center but does not show the size of the storm. Hazardous conditions can occur outside of the cone.**



**Hurricane Florence**  
 Friday September 14, 2018  
 5 AM EDT Advisory 60  
 NWS National Hurricane Center

**Current information:** ●  
 Center location 34.2 N 77.4 W  
 Maximum sustained wind 90 mph  
 Movement WNW at 6 mph

**Forecast positions:**  
 ● Tropical Cyclone ○ Post/Potential TC  
 Sustained winds: D < 39 mph  
 S 39-73 mph H 74-110 mph M > 110 mph

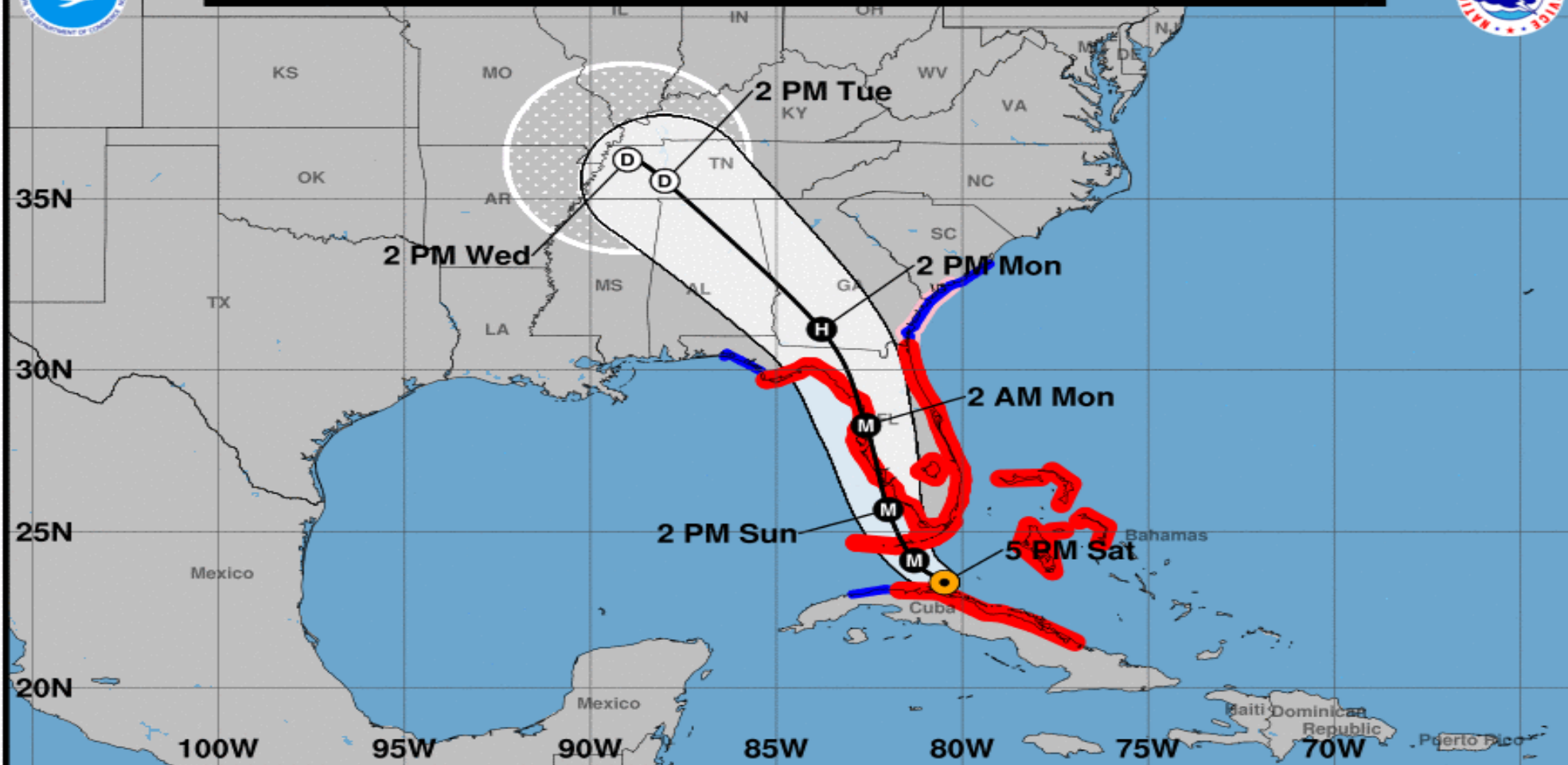
**Potential track area:**  
 ▽ Day 1-3    ▨ Day 4-5

**Watches:**  
 ■ Hurricane    ■ Trop Storm

**Warnings:**  
 ■ Hurricane    ■ Trop Storm



**Note: The cone contains the probable path of the storm center but does not show the size of the storm. Hazardous conditions can occur outside of the cone.**



**Hurricane Irma**  
 Saturday September 09, 2017  
 5 PM EDT Advisory 43  
 NWS National Hurricane Center

**Current information:** ●  
 Center location 23.4 N 80.5 W  
 Maximum sustained wind 125 mph  
 Movement WNW at 9 mph

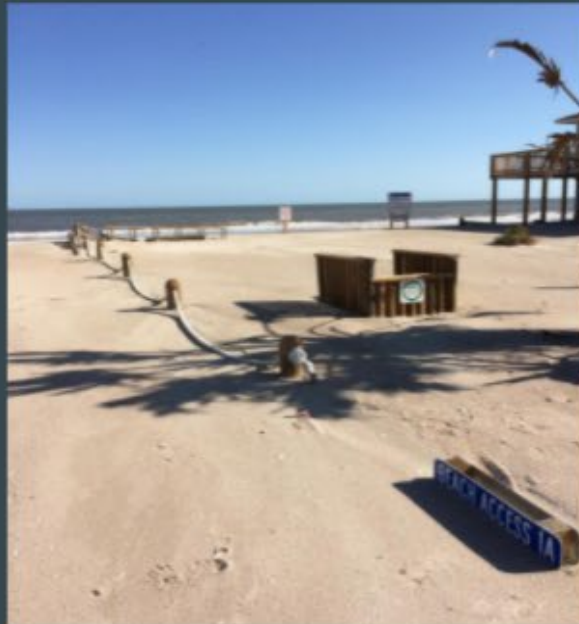
**Forecast positions:**  
 ● Tropical Cyclone ○ Post/Potential TC  
 Sustained winds: D < 39 mph  
 S 39-73 mph H 74-110 mph M > 110 mph

**Potential track area:**  
 ▽ Day 1-3 ◻ Day 4-5

**Watches:**  
 ■ Hurricane ■ Trop Storm

**Warnings:**  
 ■ Hurricane ■ Trop Storm

# Edisto Beach



Hurricane Irma  
2017

# Tybee Island, GA





# Town of Edisto Beach Preparations

---

- Edisto Beach Emergency Operations Plan
- Monthly staff meetings and Table-Top exercise with Colleton County
- Incident Command System (ICS)

# How to Prepare Your Home

- Review your insurance policy to ensure you have proper coverage
- Remove outdoor objects
- Secure garbage cans
- Protect window openings with storm shutters
- Ensure all appliances and other electronics underneath your house are unplugged and elevated (fridge, washer/dryer, golf cart charger, etc.)
- Lock doors and secure valuables

# Resources

---

## Sand and Sandbags

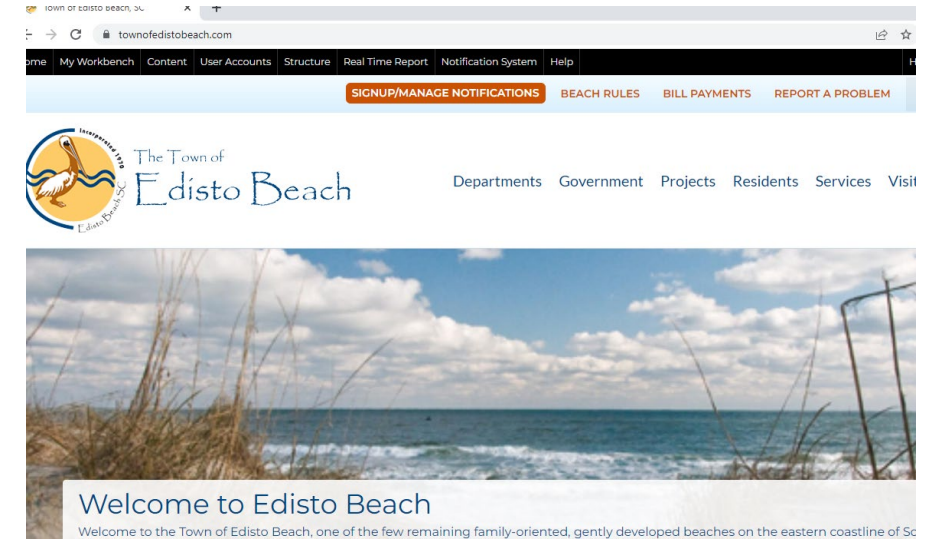
---

## CodeRED

---

South Carolina Emergency Manager App (iPhone and Android compatible)

<https://www.scemd.org/stay-informed/mobile-applications/>





# Disaster Supply Kit

(Visit [scemd.org](https://scemd.org) for  
more information)

---

3-day minimum preparation

---

Weather Alert Radio (battery operated or solar powered)

---

Non-perishable food (don't forget a can opener)

---

Drinking water, two gallon per person per day

---

Flashlights, extra batteries

---

Cash

---

First aid and mess kits

---

Insurance policies

---

Waterproof matches

---

Baby supplies

---

All prescription medication

---

Hygiene products

---

Sunscreen and bug spray

---

Important family documents





# Planning for Your Pet

---



Crate/carrier



Leash/harness/bowls



3 days of water and food



Medications, health/vaccinations records,  
microchip numbers, photo of your pet



Lost

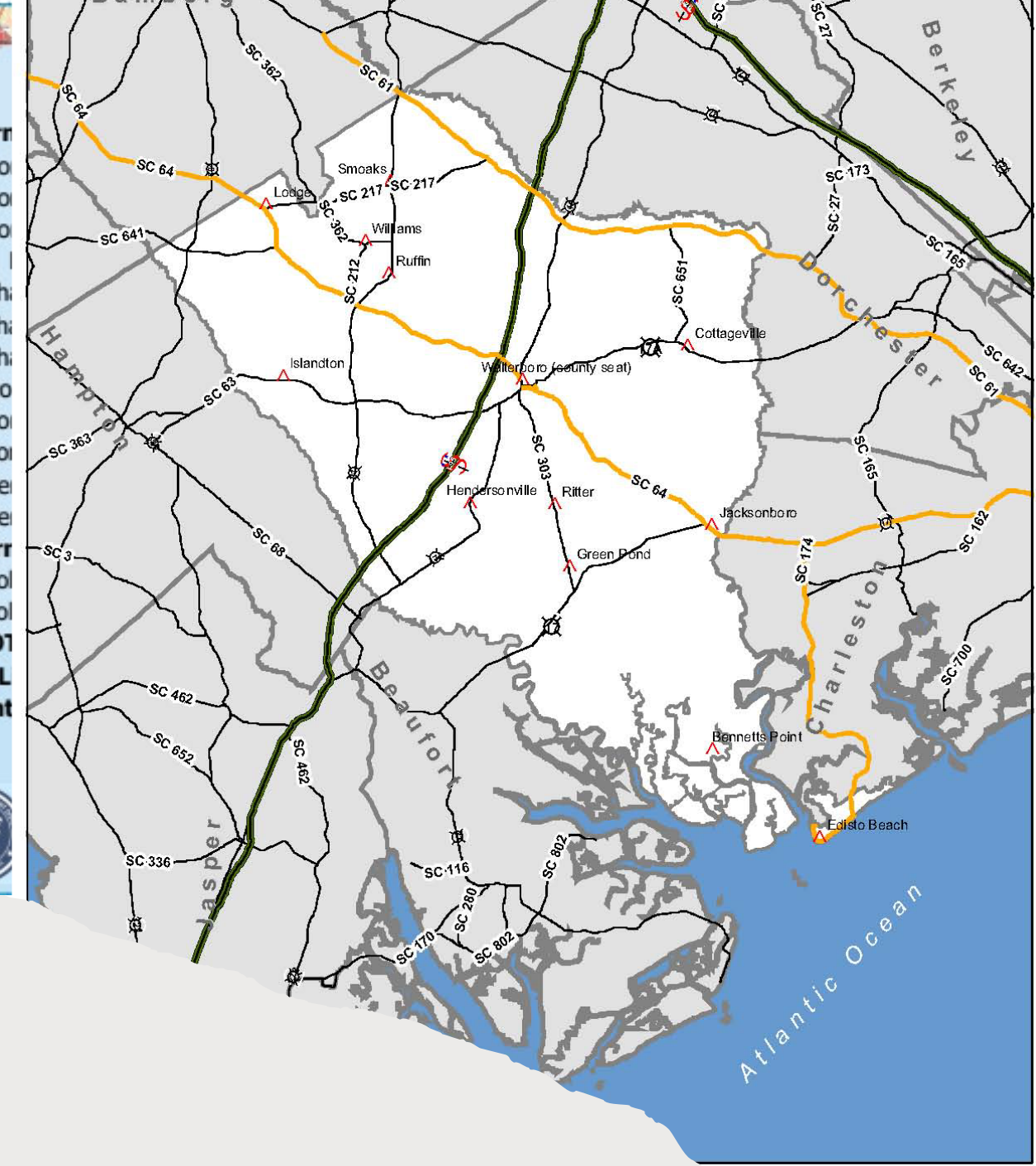
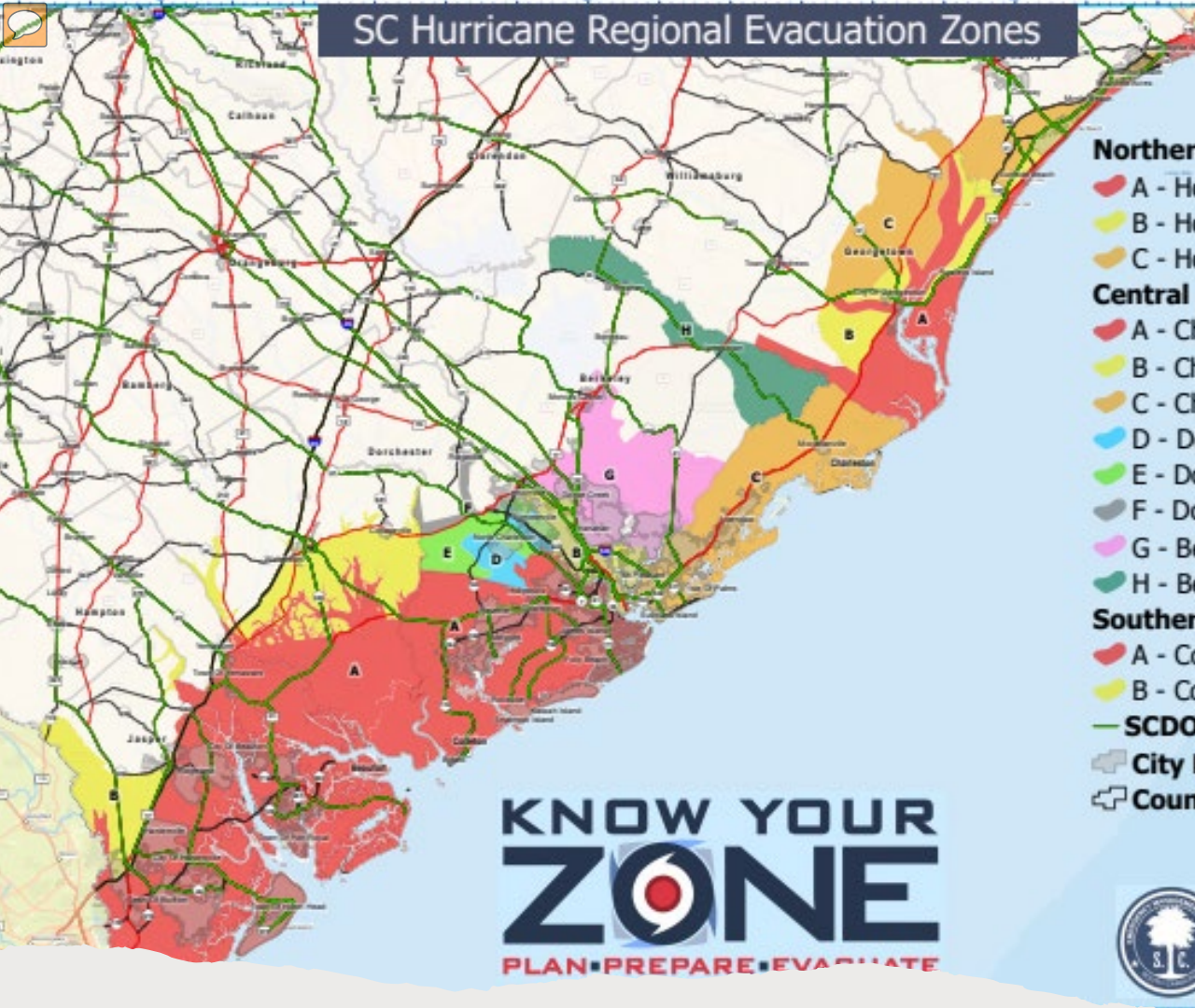


# Evacuations


---

- Notice will be provided through all available means of communications
  - CodeRED
  - Website
  - Email notifications
  - News media
  - No emergency shelters on the beach or island
  - Emergency personnel will evacuate

# SC Hurricane Regional Evacuation Zones



Evacuation Route



# Re-Entry to Edisto Beach

Re-Entry is phased and dependent upon actual conditions and severity of damage.

Occurs only after a safety assessment, initial damage assessment, and disaster recovery efforts have been made

Limited entry to permanent residents followed by unrestricted entry.

Property owner decals. Applications can be found in your chairs and on the Town [Website](#).

# Important Contact Information

---

Edisto Beach Town Hall: 843-869-2505,  
[townofedistobeach.com](http://townofedistobeach.com)

---

Colleton County Fire-Rescue: 843-539-  
1960, [colletonfire.com/em](http://colletonfire.com/em)

---

Colleton County Emergency Operations  
Center: 843-549-5632

---

S.C. Emergency Management Division  
(SCEMD): [scemd.org](http://scemd.org)

---

National Hurricane Center:  
[hurricanes.gov](http://hurricanes.gov)